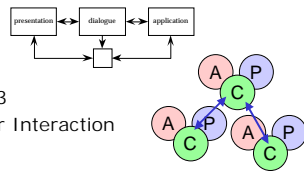


## user interface architectures

Alan Dix

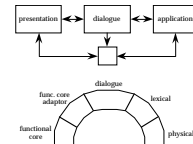


see Chapter 10 & 13  
of Human Computer Interaction  
[www.hcibook.com](http://www.hcibook.com)

## UIMS tradition interface layers

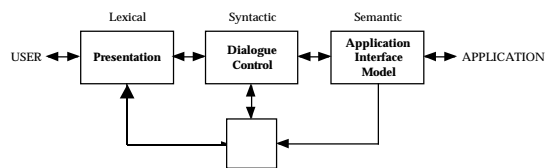
- linguistic: lexical/syntactic/semantic

- Seeheim:

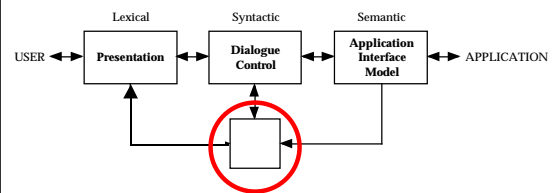


- Arch/Slinky

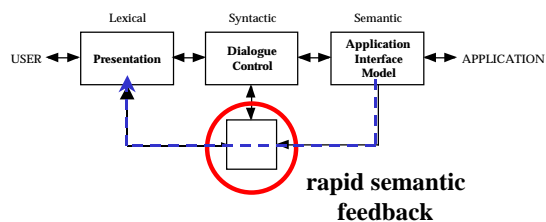
## Seeheim model



## what's this?



## the switch



## Arch/Slinky more layers!

